

1121 DOUGLAS AVENUE #201
BURLINGAME

DOWNTOWN CONDOMINIUM
CONVENIENCE



Just 3 Blocks to Burlingame Avenue!



Shopping on Burlingame Avenue!





MARK JOHNSON
BROKER ASSOCIATE | CALRE# 00667906

650.619.2828 | Mark@MarkWJohnson.net | www.MarkWJohnson.net

Coldwell Banker and this agent do not guarantee or warrant the accuracy of lot size, square footage or other information concerning the features or condition of the property provided by seller or obtained from public records or other sources, and the buyer is advised to independently verify the accuracy of that information through personal inspection and appropriate professionals. ©Marketing Designs, Inc. 650.802.0888 • marketingdesigns.net

SUMMARY OF THE HOME

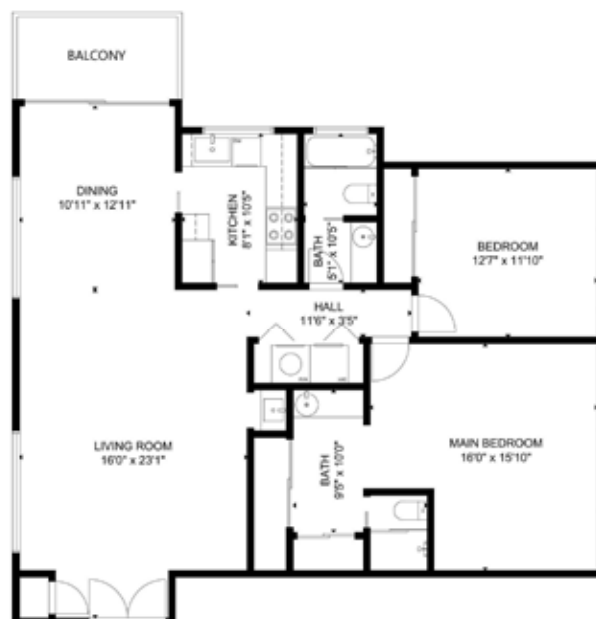
- Just 3 blocks to Burlingame Avenue shops, restaurants, library, and Caltrain
- 2-bedroom, 2-bathroom end-unit condominium
- Approximately 1,450 square feet (per county, buyer to verify)
- Second-floor location with elevator access
- Gracious double front doors open to a tiled foyer
- The home features a soft neutral color palette
- Spacious living and dining room combination with wet bar and wide sliding glass door to a private balcony with tree views
- Updated kitchen has granite counters and stainless steel appliances including electric cooktop, 2 ovens, dishwasher, and refrigerator
- Primary bedroom suite has two mirrored closets and en suite bath with shower
- Second bedroom and hallway bath with tub and overhead shower
- In-unit laundry with washer and dryer
- Gated garage parking for one car, plus storage cabinet

Offered at \$925,000 | www.1121Douglas201.com

CLOSE TO ...

Shopping on Burlingame Ave0.3 mi..... 2 min
Caltrain.....0.3 mi..... 2 min
Starbucks0.3 mi..... 2 min
Highway 1012.1 mi..... 6 min
BART.....2.7 mi..... 7 min
Mills Peninsula Hospital2.9 mi..... 9 min
San Francisco Int'l Airport.....3.9 mi..... 10 min
Hillsdale Shopping Center.....4.3 mi..... 14 min

(all times and distances are approximate; information provided by Google Maps)



Floor plan is for illustrative purposes only. Room dimensions, living area are approximate



COLDWELL BANKER
REALTY